

ExamBoosts

Pass Your Next Certification Exam Fast!

Everything you need to prepare, learn & pass your certification exam easily.

365 days free updates. First attempt guaranteed success.

15+
YEARS IN BUSINESS

53697+
SUCCESSFUL CASES

53207+
SATISFIED CLIENTS

53297+
THE NUMBER OF CONSULTING

TRY BEFORE YOU BUY

Download a free sample of any of our exam questions and answers

- ✓ 24/7 customer support, Secure shopping site
- ✓ Free One year updates to match real exam scenarios
- ✓ If you failed your exam after buying our products we will refund the full amount back to you.



-  **365 Days Free Updates**
Free update is available within 365 days after your purchase. After 365 days, you will get 50% discounts for updating.
-  **Security & Privacy**
We respect customer privacy. We use McAfee's security service to provide you with utmost security for your personal information & peace of mind.
-  **Instant Download**
After Payment, our system will send you the products you purchase in mailbox in a minute after payment. If not received within 2 hours, please contact us.
-  **Money Back Guarantee**
Full refund if you fail the corresponding exam in 60 days after purchasing. And Free get any another product.

<http://www.examboosts.com/>

Reliable & Efficient Test Practice Questions to Satisfy All Candidates

Exam : **NSE5_FMG-7.0**

Title : Fortinet NSE 5 - FortiManager
7.0

Vendor : Fortinet

Version : DEMO

NO.1 Which three settings are the factory default settings on FortiManager? (Choose three.)

- A. Reports and Event Monitor panes are enabled
- B. port1 interface IP address is 192.168.1.99/24
- C. Password is fortinet
- D. Username is admin
- E. FortiAnalyzer features are disabled

Answer: B,D,E

NO.2 Which two conditions trigger FortiManager to create a new revision history? (Choose two.)

- A. When configuration revision is reverted to previous revision in the revision history
- B. When FortiManager installs device-level changes to a managed device
- C. When FortiManager is auto-updated with configuration changes made directly on a managed device
- D. When changes to device-level database is made on FortiManager

Answer: B,C

NO.3 View the following exhibit, which shows the Download Import Report:

```
Start to import config from devices(Remote-FortiGate) vdom (root)to adom (MyADOM),
Package(Remote-FortiGate)
"firewall address", SUCCESS,"(name=REMOTE_SUBNET,oid=580, new object)"
"firewall policy",SUCCESS,"(name=1, oid=990,new object)"
"firewall policy",FAIL,"(name=ID:2(#2), oid=991, reason=interface(interface binding
Contradiction.detail:any<-port6)binding fail)"
```

Why it is failing to import firewall policy ID 2?

- A. The address object used in policy ID 2 already exist in ADON database with any as interface association and conflicts with address object interface association locally on the FortiGate
- B. Policy ID 2 is configured from interface any to port6 FortiManager rejects to import this policy because any interface does not exist on FortiManager
- C. Policy ID 2 does not have ADOM Interface mapping configured on FortiManager
- D. Policy ID 2 for this managed FortiGate already exists on FortiManager in policy package named Remote-FortiGate.

Answer: A

Explanation:

FortiManager_6.4_Study_Guide-Online - page 331 & 332

NO.4 An administrator has assigned a global policy package to custom ADOM1. Then the administrator creates a new policy package, Fortinet, in the custom ADOM1.

Which statement about the global policy package assignment to the newly-created policy package Fortinet is true?

- A. When a new policy package is created, it automatically assigns the global policies to the new

package.

B. When a new policy package is created, you need to assign the global policy package from the global ADOM.

C. When a new policy package is created, you need to reapply the global policy package to the ADOM.

D. When a new policy package is created, you can select the option to assign the global policies to the new package.

Answer: A

Explanation:

Global Policy Package is applied at the ADOM level and you have the option to choose which ADOM policy packages you want to exclude (there is no option to choose Policy Packages to include).

NO.5 Which of the following statements are true regarding VPN Manager? (Choose three.)

A. VPN Manager must be enabled on a per ADOM basis.

B. VPN Manager automatically adds newly-registered devices to a VPN community.

C. VPN Manager can install common IPsec VPN settings on multiple FortiGate devices at the same time.

D. Common IPsec settings need to be configured only once in a VPN Community for all managed gateways.

E. VPN Manager automatically creates all the necessary firewall policies for traffic to be tunneled by IPsec.

Answer: A,C,D

NO.6 View the following exhibit:

```
#diagnose fupdate view-serverlist fds
Fortiguard Server Comm: Enabled
Server Override Mode: Loose
FDS server list :
Index Address          Port    TimeZone  Distance  Source
- - - - -
*0   10.0.1.50             8890    -5         0         CLI
1    96.45.33.89           443     -5         0         FDNI
2    96.45.32.81           443     -5         0         FDNI
....
38  fds1.fortinet.com     443     -5         0         DEFAULT
```

How will FortiManager try to get updates for antivirus and IPS?

A. From the list of configured override servers with ability to fall back to public FDN servers

B. From the configured override server list only

C. From the default server fds1.fortinet.com

D. From public FDNI server with highest index number only

Answer: A

NO.7 Refer to the exhibits.

Exhibit one.

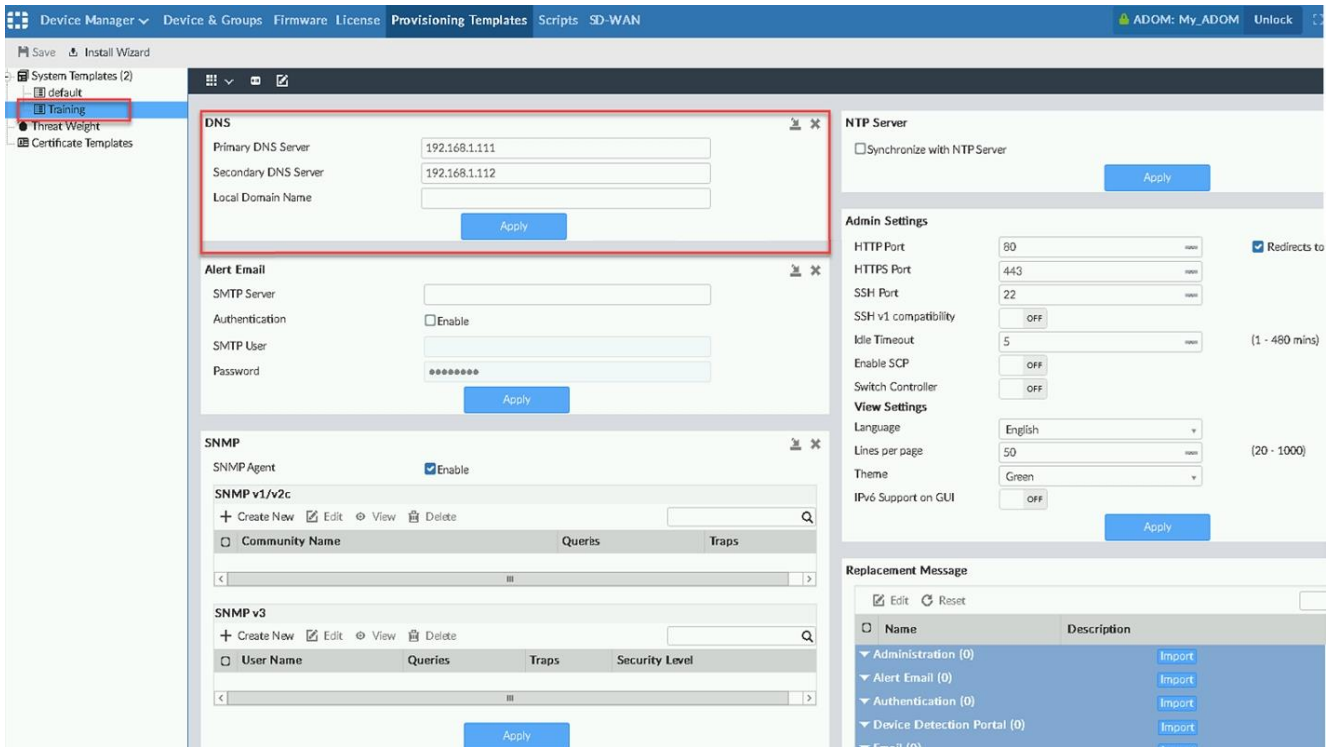
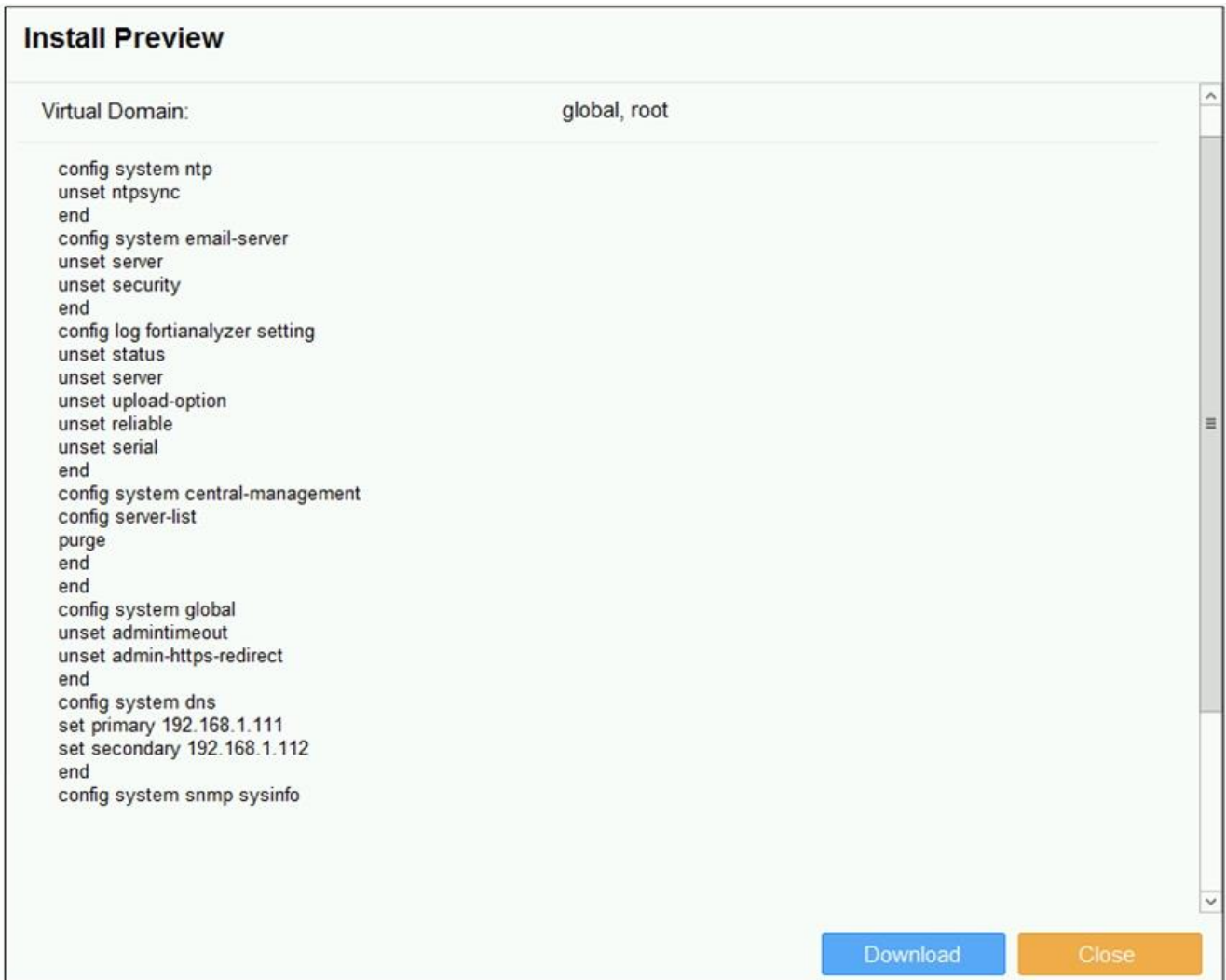


Exhibit two.



An administrator created a new system template named Training with two new DNS addresses on

FortiManager. During the installation preview stage, the administrator notices that many unset commands need to be pushed.

What can be the main reason for these unset commands?

- A.** The DNS addresses in the default system settings are the same as the Training system template
- B.** The Training system template has other default settings
- C.** The ADOM is locked by another administrator
- D.** The Training system template does not have assigned devices

Answer: B

NO.8 Which two statements about Security Fabric integration with FortiManager are true? (Choose two.)

- A.** The Security Fabric license, group name and password are required for the FortiManager Security Fabric integration
- B.** The Fabric View module enables you to generate the Security Fabric ratings for Security Fabric devices
- C.** The Security Fabric settings are part of the device level settings
- D.** The Fabric View module enables you to view the Security Fabric ratings for Security Fabric devices

Answer: C,D